

High Meadow Estates

7308 Magnolia Hollow Drive

4,828 square foot home on a 1.08 acre homesite



- Plan designed in collaboration with Brickmoon Design
- One story home with 5 to 6 bedrooms, 6.5 bathrooms and a 3 car garage
- Transitional design with a stone and brick exterior
- Spacious covered front porch
- Groin vault ceiling detail in gallery at the front of the home
- Extra large dining room with a built-in butler's pantry
- Great room with 14' high ceiling and Western sliding doors that open to the covered outdoor living area
- Kitchen with high-end stainless appliances and custom cabinetry
- Primary suite with spa-like amenities including a soaking tub and extra-large shower
- Primary closet with separate sides and ample storage space
- Mudroom conveniently located near the garages
- Huge gameroom located near 3 secondary bedrooms
- Wrap around covered back porch, complete with a summer kitchen



Contact Greg Miller about this property

(832) 651-7487

Greg.Miller@JamestownEstateHomes.com



We're on



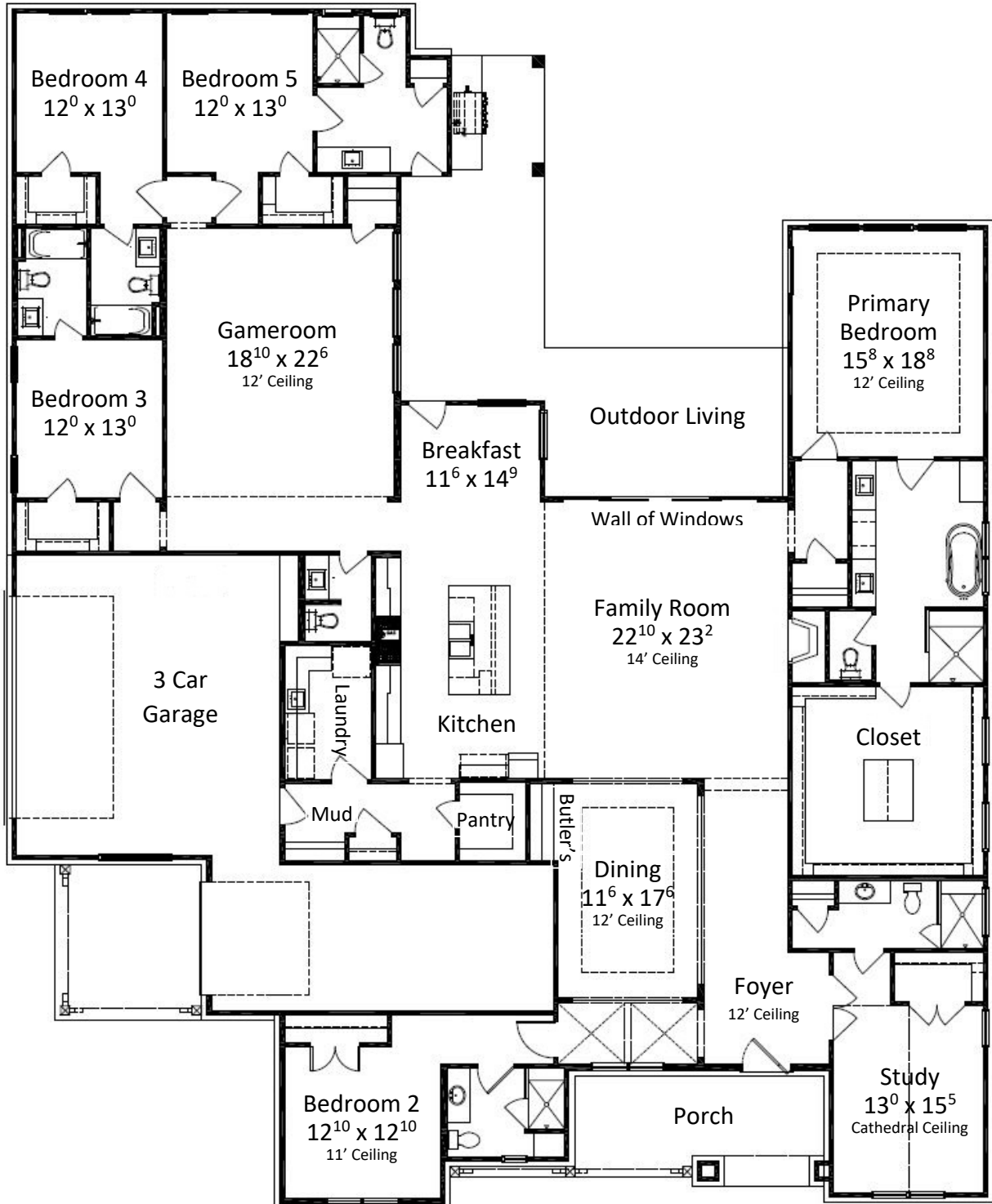
Instagram



EQUAL HOUSING OPPORTUNITY

7117 Morningbrook Drive Montgomery, TX 77316

4,828 sq. ft.



All Plans Copyrighted and subject to change.
Room dimensions are approximate.