

# Water's Edge at Towne Lake

10407 E Rio Grande  
4,525 Sq. Ft. Home on a 14,497 Sq. Ft. Lot



- Located in the gated Water's Edge neighborhood within Towne Lake
- 5 bedrooms, 5.5 baths and a 3 car garage
- Chic one-story design with a Hill-Country inspired exterior
- Huge front porch, perfect for sitting in rocking chairs
- Wine room adjacent to the dining room for easy serving
- A sliding window wall in the family room opens to a covered outdoor living space
- Spacious open kitchen with island seating and high-end appliances
- Gameroom with built-in snack bar
- Home gym or flex room
- Stunning primary suite with a 15'x20' bedroom, bath with barrel ceiling detail, plus two large closets
- Guest suite in its own wing of the home
- 3 additional secondary bedrooms, each with their own bath and walk-in closet
- The lot has 14,497 square feet and a northeast facing exposure.

Contact Victoria about this property, or to build in Towne Lake.

Call/Text (832) 296-1663

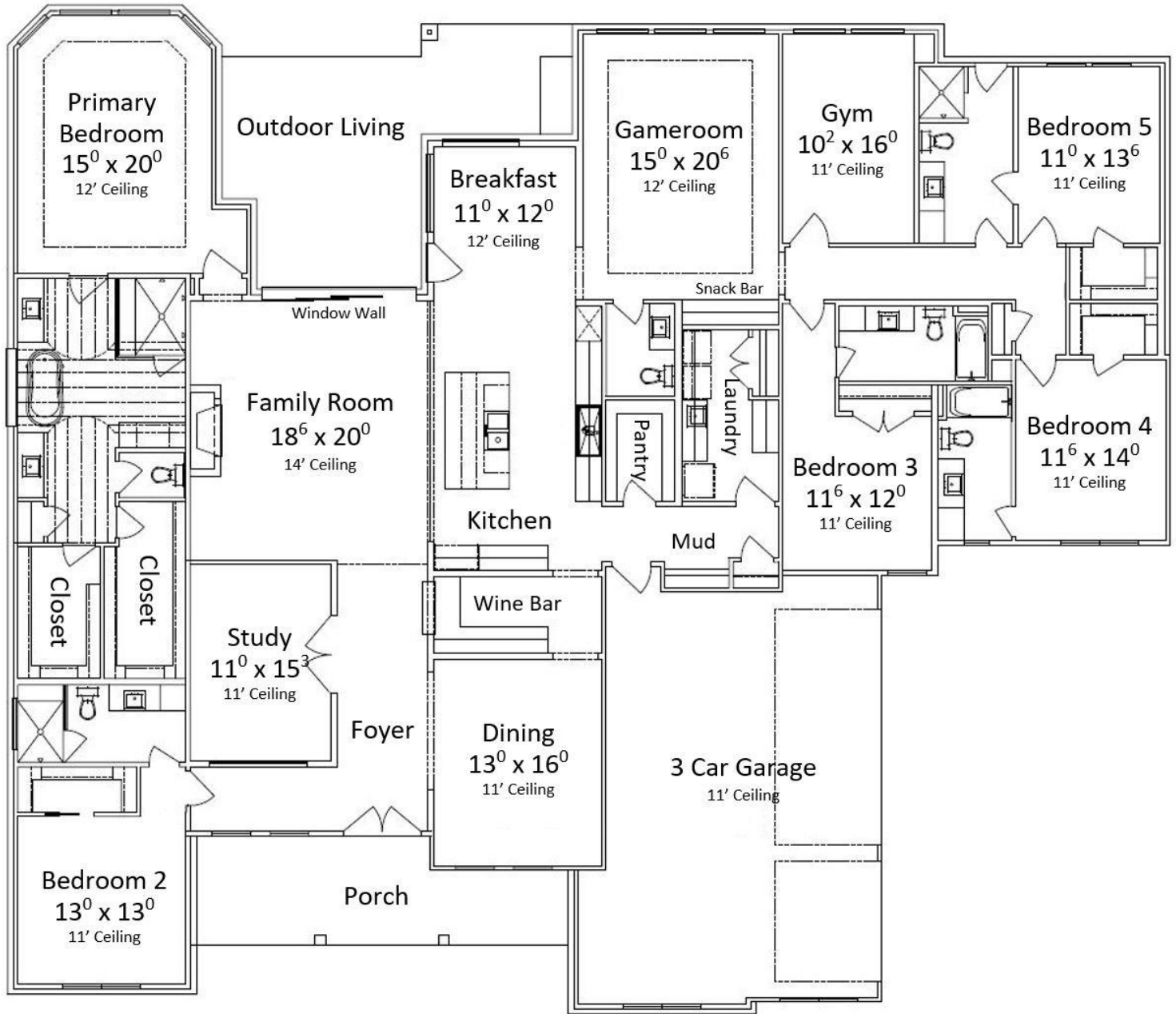
[Victoria.Devenney@JamestownEstateHomes.com](mailto:Victoria.Devenney@JamestownEstateHomes.com)



[JamestownEstateHomes.com](http://JamestownEstateHomes.com)



# 10407 E Rio Grande Cypress, TX 77433



4,525 Sq. Ft.  
Est. Fall Completion

All Plans Copyrighted and subject to change  
Dimensions are approximate..

731 W. 16<sup>th</sup> St., Houston, TX 77008  
JamestownEstateHomes.com

