

# Sandalwood

11906 Longleaf Lane \$2,650,000

5,775 square foot home on a 16,275 square foot home-site



Jamestown Estate Homes presents a 5760 square foot Santa Barbara-style design in Sandalwood! This small community is a hidden gem in the Memorial area. With three lakes and trails, Sandalwood is perfect for families with active lifestyles.

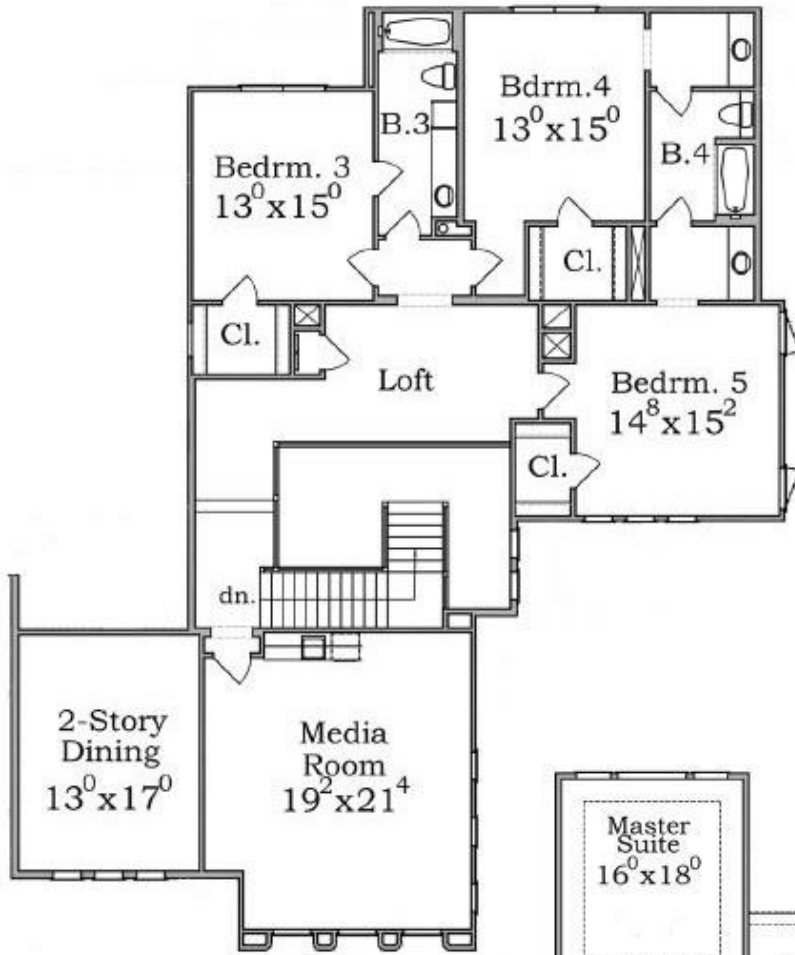
Inside this stylish home, you'll first see a dining room with a two-story ceiling, bringing in lots of natural light. The great room flows to the kitchen, breakfast room and wet bar, ideal for get-togethers with family and friends. In addition, the study and separate home office, plus a mud room off the garage, make this home as functional as it is beautiful. The gameroom leads to a stunning outdoor living space, complete with a fireplace and summer kitchen. Guests will love their private suite, set away from the other bedrooms in the home. The master suite is sure to impress, with a groin vault ceiling in the master bath, oversized walk-in shower, and two huge closets.

Upstairs, you'll find three generous bedrooms and an oversized media/flex room upstairs. These spaces will allow you plenty of room to spread out and enjoy!

Call/Text Victoria Hawes (832) 296-1663  
Victoria.Hawes@jamestownestatehomes.com



# Sandalwood—11906 Longleaf Lane



Second Floor Plan



First Floor Plan

All Plans Copyrighted and subject to change.  
Room dimensions are approximate..